

DIRECTIONS

Track

NOTE: If using the Gallery System Clear Tape system, leave at least a 40mm gap between tracks for the hangers to be inserted into the end of the track.

Fixing to Plasterboard

Use a stud finder or tap the wall lightly with a hammer to locate wall studs. Mark the centre of the stud with a pencil.

NOTE: If it is not possible to line up with all available wall studs you can use “Wallmate” plasterboard fittings (see illustration 1).

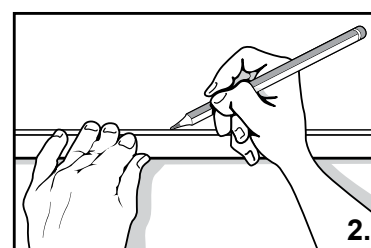
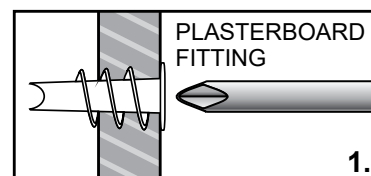
Decide on the height at which you would like the track. Drill a 4mm hole in the centre of the length of track, using the V groove in the top of the track as a guide. Drill a hole at least 20mm from each end of the track and finally drill the remaining holes 400 to 500mm apart depending on the location of your wall studs. This configuration will result in at least five screws per 2m length.

Mark with a pencil at intervals measuring down from the ceiling to ensure the track is level. Using the track as a ruler mark the wall with a pencil (see illustration 2).

Mark the position of the centre hole on the wall, then tap a small nail into the plasterboard.

If it hits a wall stud, fix the track in place with a 38mm x 8 gauge pan head screw, (see illustration 3) if not, fit a plasterboard fitting first.

Mark the positions of the remaining holes. Remove the track and tap a nail into each marked position to check for studs. Screw in the Wallmate plasterboard fittings where needed, and then screw the track to the wall.



38mm x 8 gauge panhead self tapping screws.



Fixing to Masonry

Predrill your track starting with a 5mm hole in the centre of the length of track. Next drill a hole at least 20mm from each end of the track and finally drill the remaining holes 400 to 500mm apart. This configuration will result in at least five screws per 2m length.

Decide on the height you would like to install the track and mark the wall with a marker pen or scribe using the track as a ruler. Mark the position of the centre hole on the wall. Drill a pilot hole into the wall with a 4mm (5/32") masonry drill to a depth of 40mm (2"). Now re-drill using a 6mm (1/4") masonry drill.

Tap a 6mm (1/4") wall plug into the hole so the top is flush with the surface. Temporarily screw the track onto the wall into prepared centre hole with a 38mm x 8 gauge screw.

Mark the position of the remaining holes, remove the track and repeat the drilling process as per the centre hole. Screw the track to the wall using 38mm x 8 gauge screws.

Fit screw 1 or 2 turns & tap plug lightly into hole.

